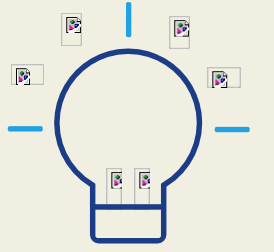
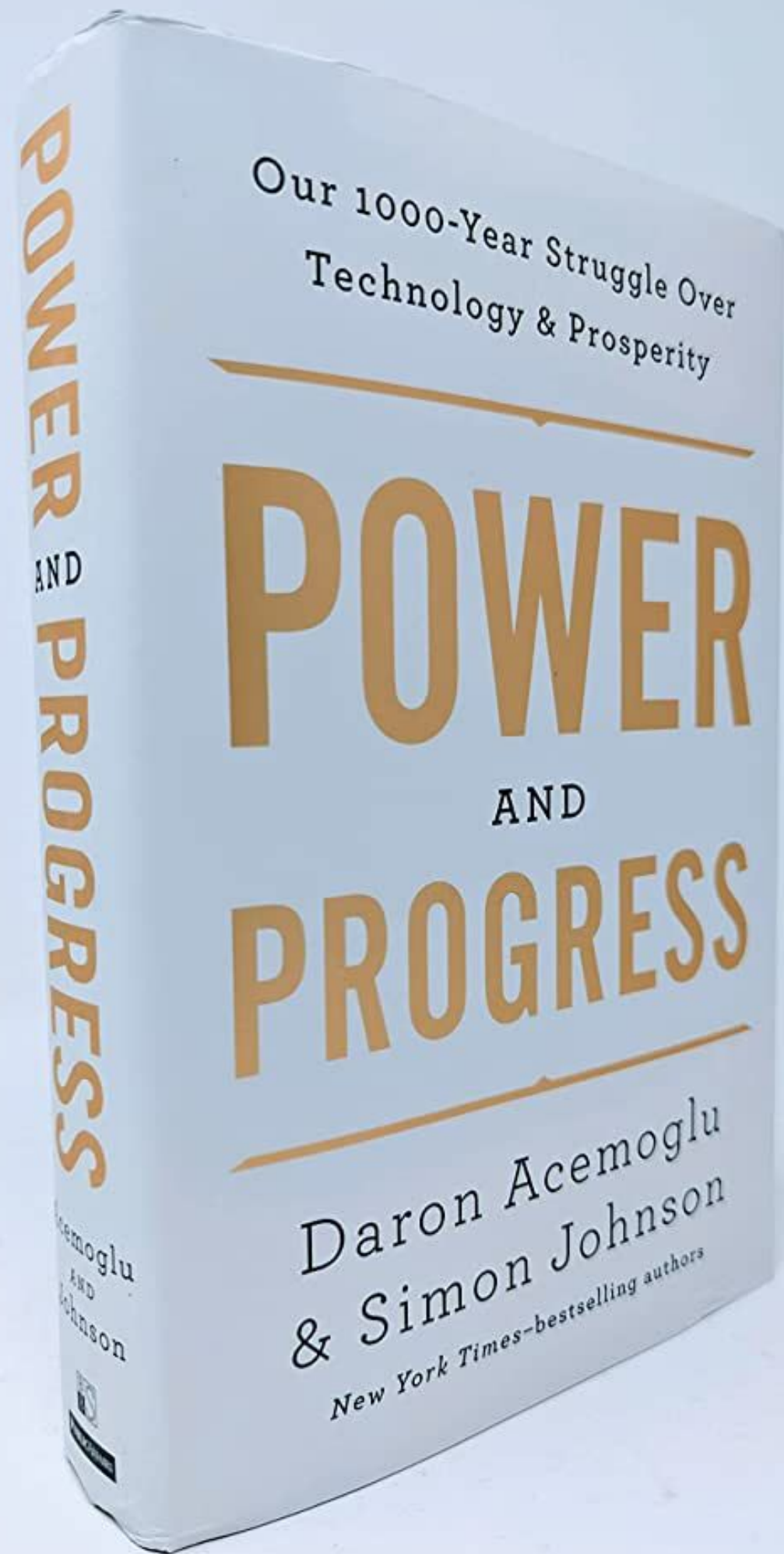


"Εξουσία και Τεχνητή Νοημοσύνη: Είναι εφικτό ένα συμμετοχικό μοντέλο;"

Αλέξανδρος Μελίδης
Γενικός Διευθυντής ΕΕΛΛΑΚ



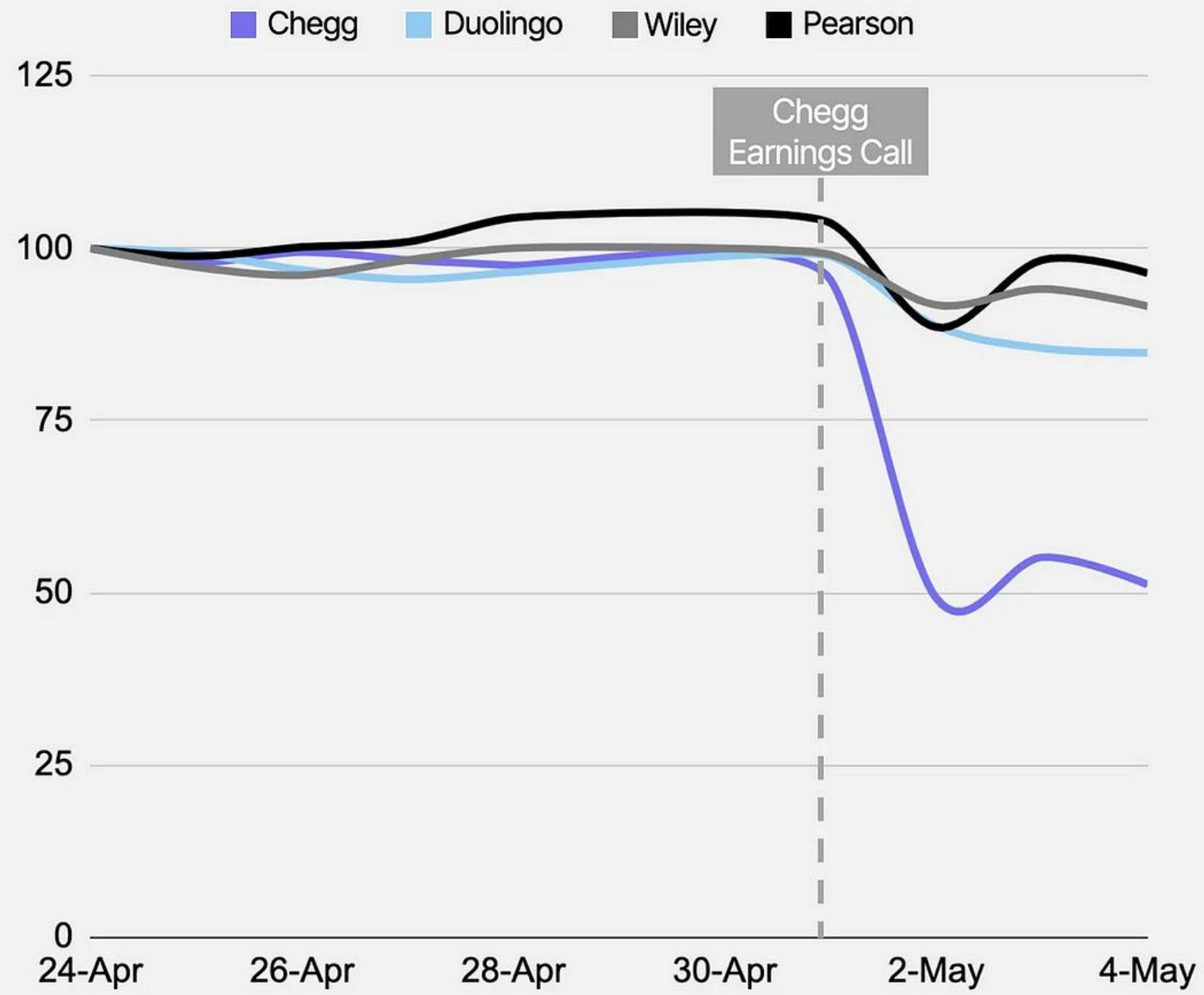
Η Αλλαγή έρχεται όταν η κοινωνία θέτει ερωτήματα

Τι καθορίζει ΠΟΤΕ η τεχνολογική
καινοτομία (AI) αυξάνει τους μισθούς;

Τι χρειάζεται να γίνει για να
ανακατευθύνουμε την τεχνολογική
καινοτομία (AI) προς την
οικοδόμηση ενός μέλλοντος με
ευημερία;

I was gonna go to class, then I got AI

Stock price of key education firms



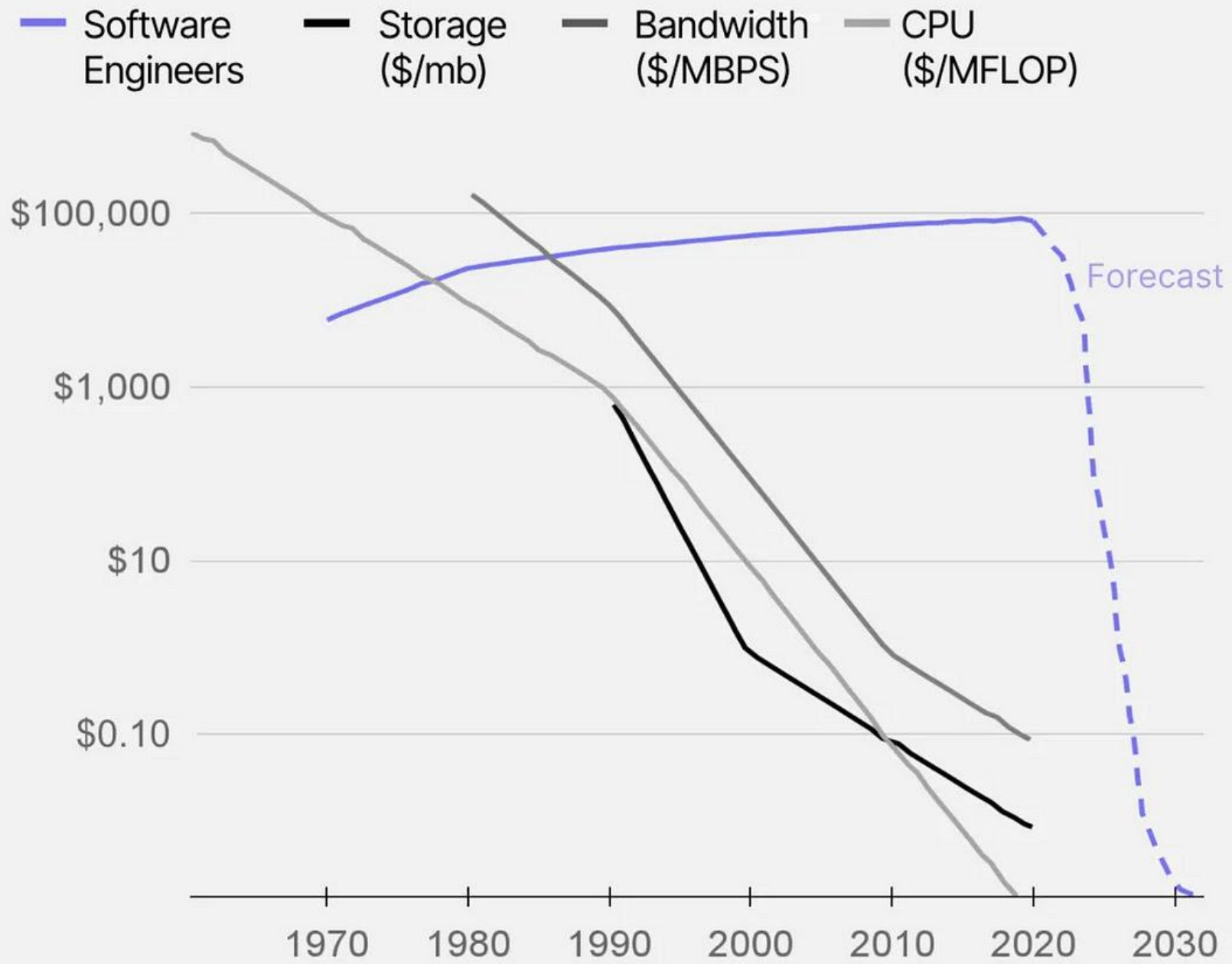
Source: Yahoo Finance

exponentialview.co

The next collapsing tech cost is software itself



Computation costs (logarithmic scale)



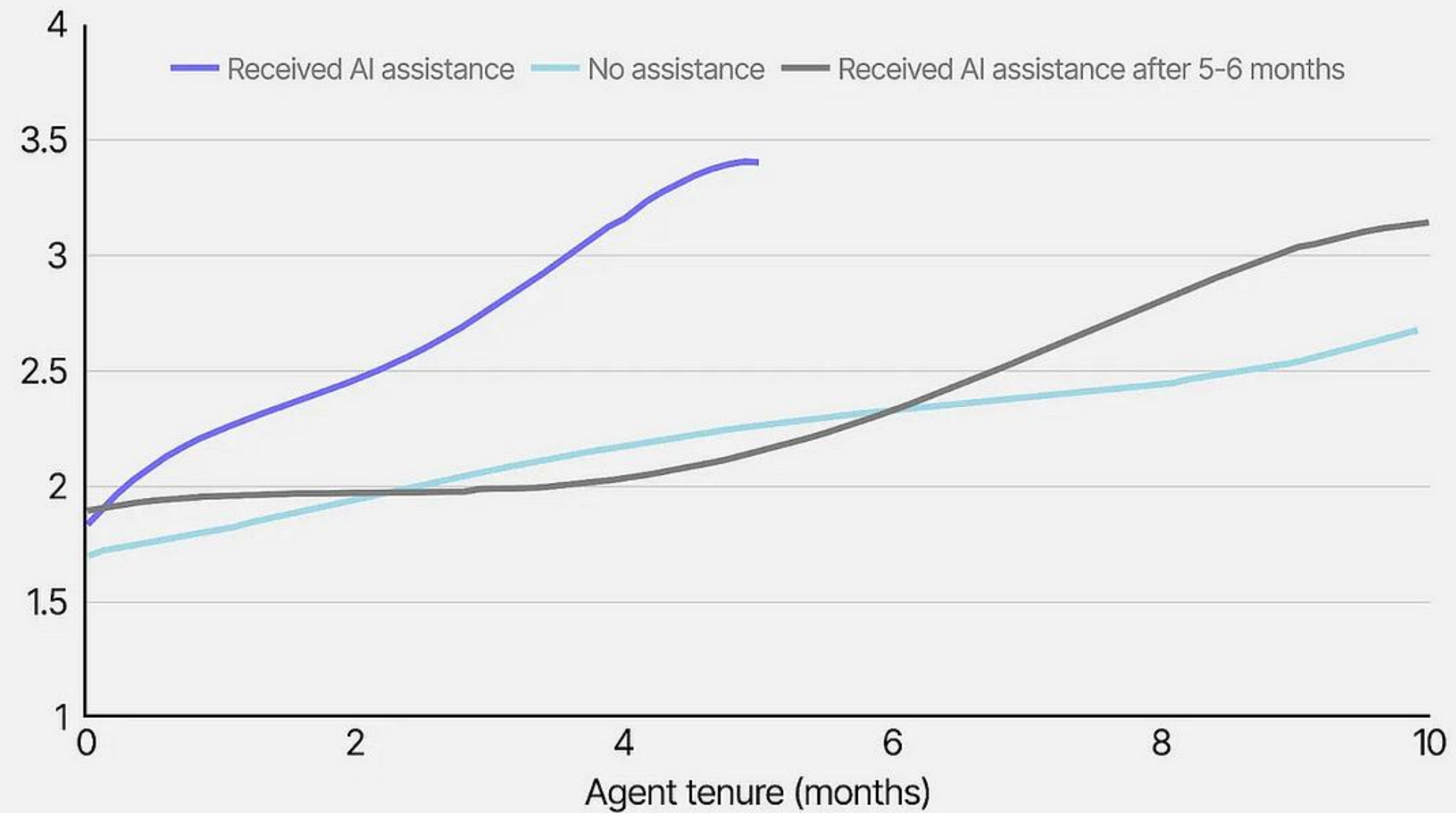
Source: SK Ventures

exponentialview.co

AI allows workers to gain six months of experience in only two months



Resolutions per hour



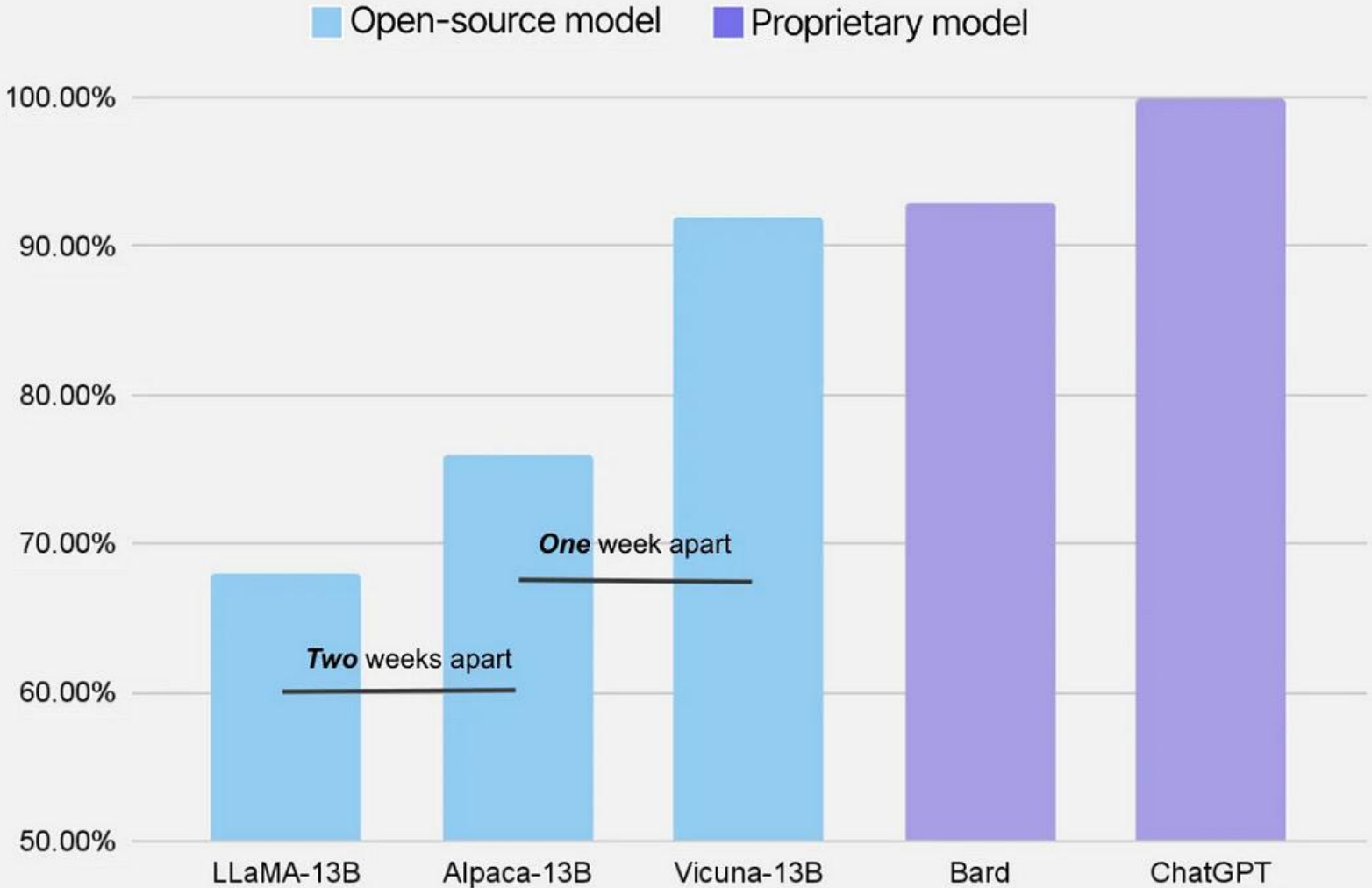
Source: Brynjolfsson et al.

exponentialview.co

Evolving chatbots



Relative response quality assessed by GPT-4



Source: LMSYS ORG

Note: LLaMA-13B is owned by Meta but is effectively open-source since the model weights were leaked.

exponentialview.co

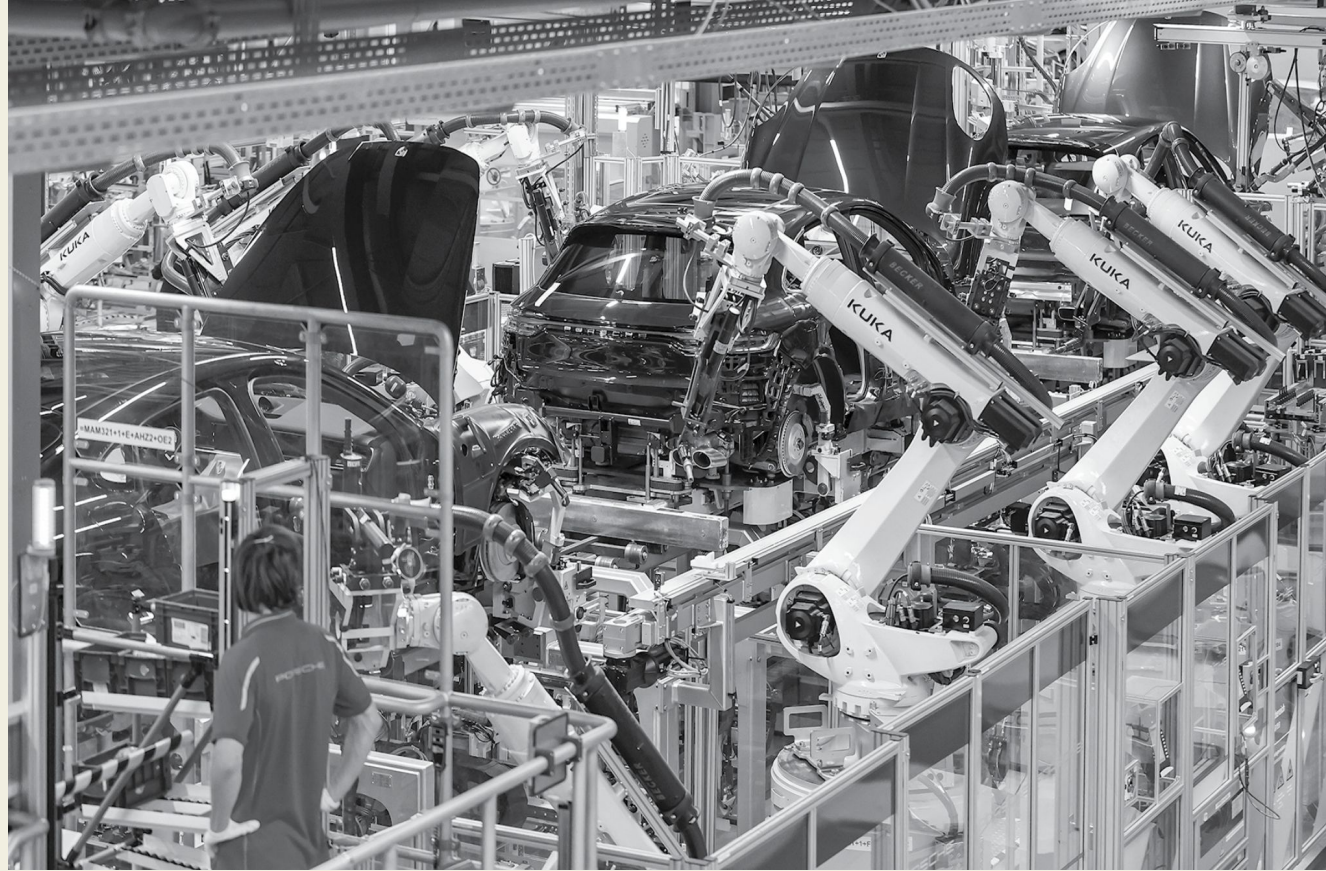


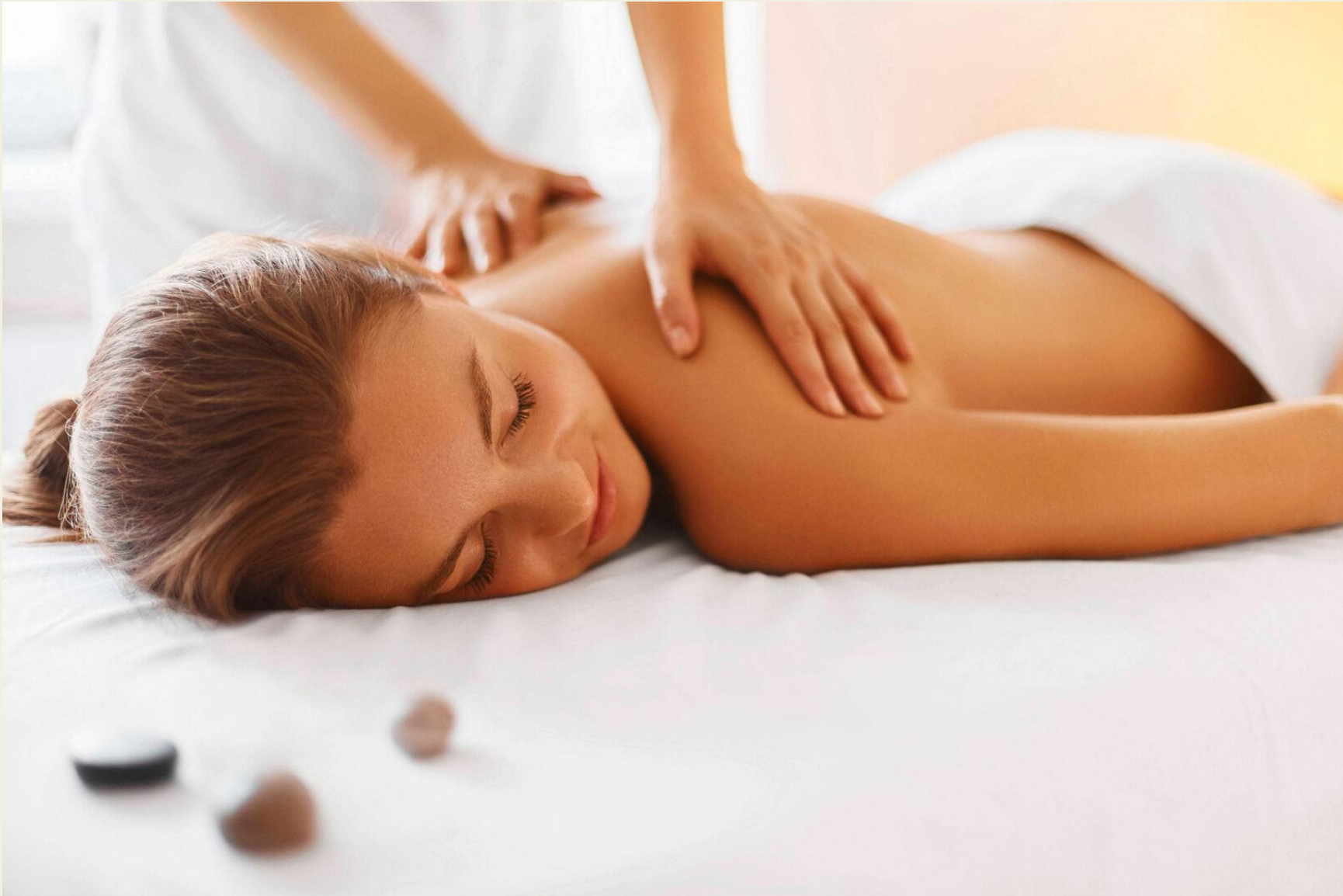
AI OPENNESS - Hugging Face CEO US Congress Testimony

Grading Foundation Model Providers' Compliance with the Draft EU AI Act

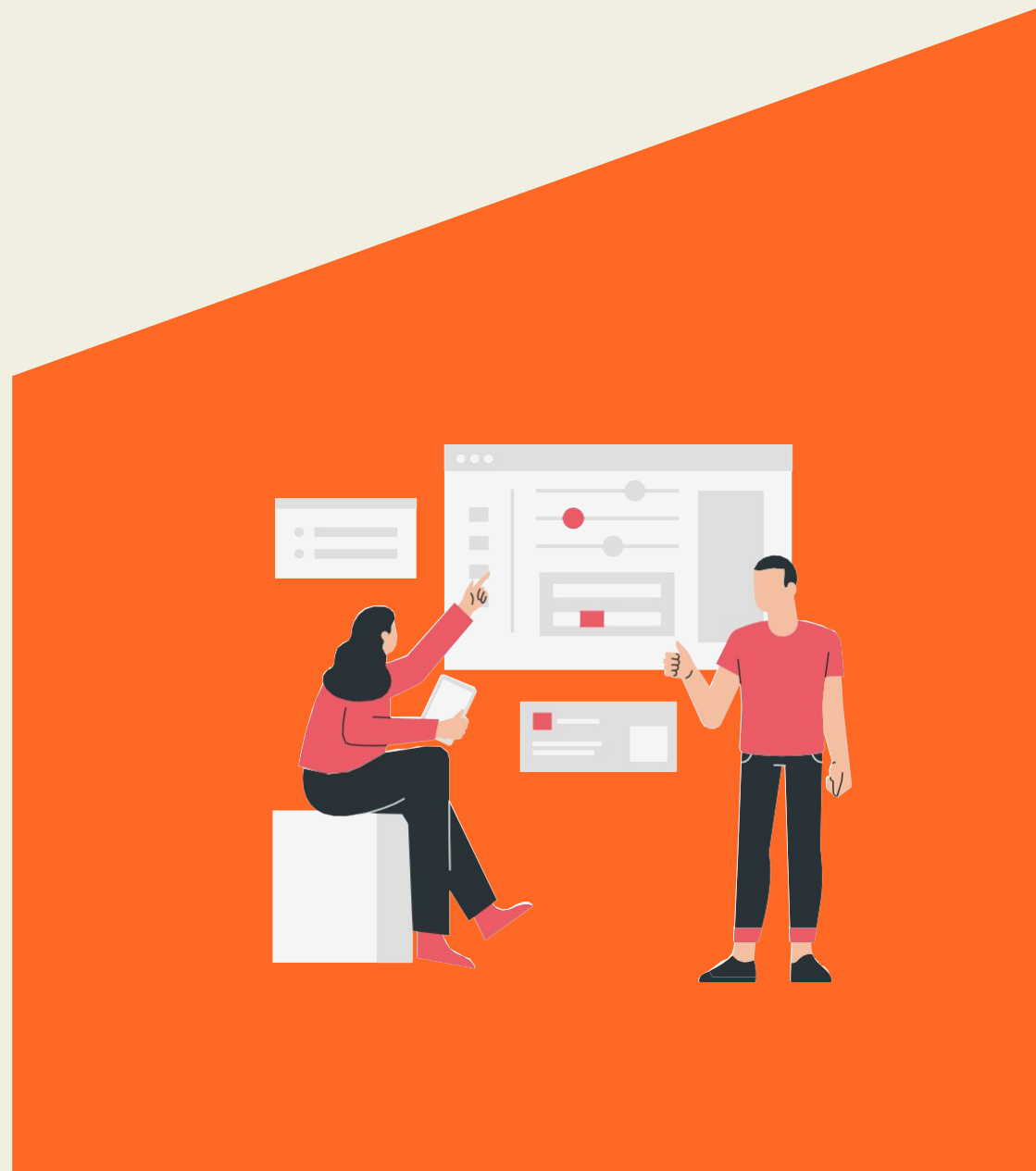
Source: Stanford Research on Foundation Models (CRFM), Institute for Human-Centered Artificial Intelligence (HAI)

	OpenAI	cohere	stability.ai	ANTHROPIC	Google	BigScience	Meta	AI21 labs	ALEPH ALPHA	ELEutherAI	Totals
Draft AI Act Requirements	GPT-4	Cohere Command	Stable Diffusion v2	Claude	PaLM 2	BLOOM	LLaMA	Jurassic-2	Luminous	GPT-NeoX	
Data sources	● ○ ○ ○	● ● ● ○	● ● ● ●	○ ○ ○ ○	● ● ○ ○	● ● ● ●	● ● ● ●	○ ○ ○ ○	○ ○ ○ ○	● ● ● ●	22
Data governance	● ● ○ ○	● ● ● ○	● ● ○ ○	○ ○ ○ ○	● ● ● ○	● ● ● ●	● ● ○ ○	○ ○ ○ ○	○ ○ ○ ○	● ● ● ○	19
Copyrighted data	○ ○ ○ ○	○ ○ ○ ○	○ ○ ○ ○	○ ○ ○ ○	○ ○ ○ ○	● ● ● ○	○ ○ ○ ○	○ ○ ○ ○	○ ○ ○ ○	● ● ● ●	7
Compute	○ ○ ○ ○	○ ○ ○ ○	● ● ● ●	○ ○ ○ ○	○ ○ ○ ○	● ● ● ●	● ● ● ●	○ ○ ○ ○	● ○ ○ ○	● ● ● ●	17
Energy	○ ○ ○ ○	● ○ ○ ○	● ● ● ○	○ ○ ○ ○	○ ○ ○ ○	● ● ● ●	● ● ● ●	○ ○ ○ ○	○ ○ ○ ○	● ● ● ●	16
Capabilities & limitations	● ● ● ●	● ● ● ○	● ● ● ●	● ○ ○ ○	● ● ● ●	● ● ● ○	● ● ○ ○	● ● ○ ○	● ○ ○ ○	● ● ● ○	27
Risks & mitigations	● ● ● ○	● ● ○ ○	● ○ ○ ○	● ○ ○ ○	● ● ● ○	● ● ● ○	● ○ ○ ○	● ● ○ ○	○ ○ ○ ○	● ○ ○ ○	16
Evaluations	● ● ● ●	● ● ○ ○	○ ○ ○ ○	○ ○ ○ ○	● ● ○ ○	● ● ● ○	● ● ○ ○	○ ○ ○ ○	● ○ ○ ○	● ○ ○ ○	15
Testing	● ● ● ○	● ● ○ ○	○ ○ ○ ○	○ ○ ○ ○	● ● ○ ○	● ● ○ ○	○ ○ ○ ○	● ○ ○ ○	○ ○ ○ ○	○ ○ ○ ○	10
Machine-generated content	● ● ● ○	● ● ● ○	○ ○ ○ ○	● ● ● ○	● ● ● ○	● ● ● ○	○ ○ ○ ○	● ● ● ○	● ○ ○ ○	● ● ○ ○	21
Member states	● ● ○ ○	○ ○ ○ ○	○ ○ ○ ○	● ● ○ ○	● ● ● ●	○ ○ ○ ○	○ ○ ○ ○	○ ○ ○ ○	● ○ ○ ○	○ ○ ○ ○	9
Downstream documentation	● ● ● ○	● ● ● ●	● ● ● ●	○ ○ ○ ○	● ● ● ●	● ● ● ●	● ● ○ ○	○ ○ ○ ○	○ ○ ○ ○	● ● ● ○	24
Totals	25 / 48	23 / 48	22 / 48	7 / 48	27 / 48	36 / 48	21 / 48	8 / 48	5 / 48	29 / 48	





Ευχαριστώ για τη προσοχή σας



almel@eellak.gr

<https://eellak.gr/>